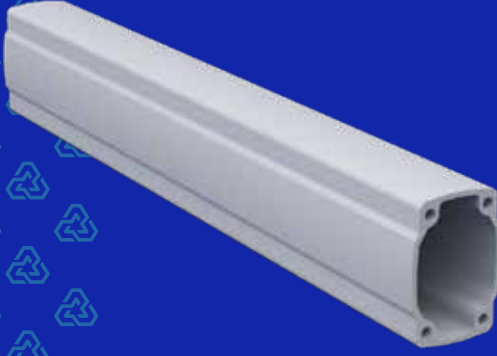




TS EN 50085-1  
TS EN IEC 61439-1

**5**  
**YEARS**  
WARRANTY



# ARM050.025

The series of ARM.050 Operator Arm Systems are suitable for short length arm applications produced for panels carrying light loads. This operator support arm series offers many functional solutions with its wide range components. Code RAL 7035 is a light gray paint used for this product with impermeability feature.

**Weight**  
500gr.

**Color**  
RAL7035

**Material**  
Aluminum

**Package Dimensions**  
50x75x260

